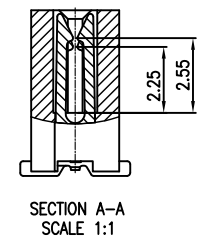
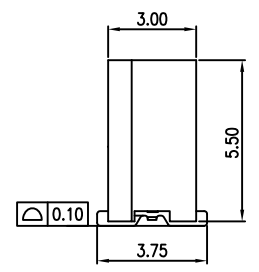
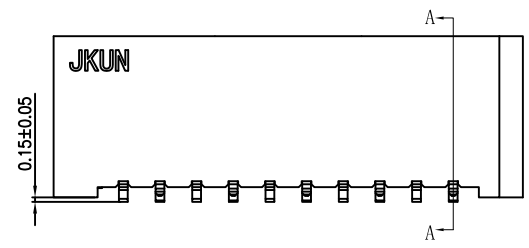
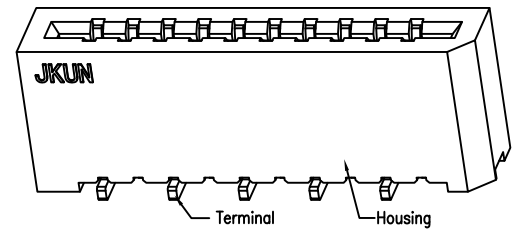
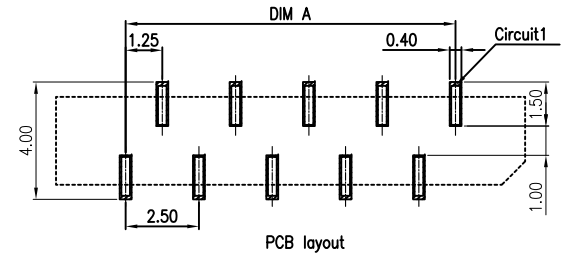
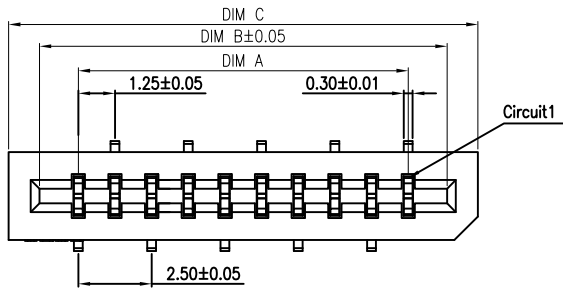
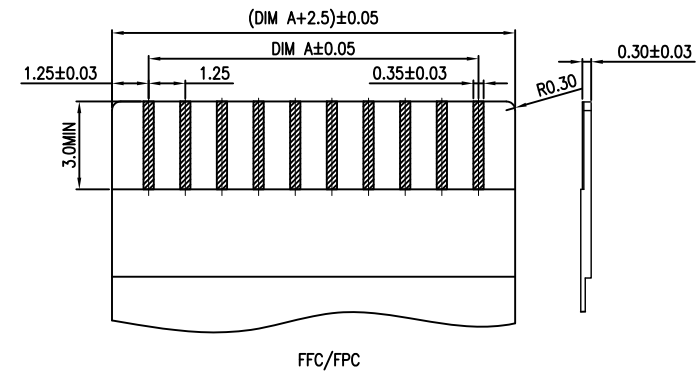
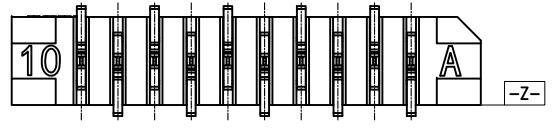


REV	DESCRIPTION	DESIGN	DATE
A	NEW RELEASE	Ryan	2021/03/18

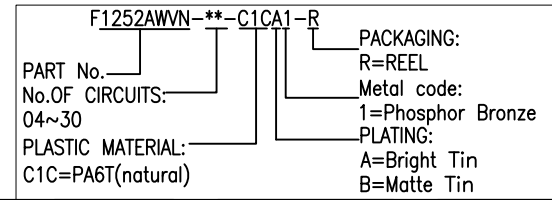


CKT	DIM A	DIM B	DIM C
4	3.75	6.40	8.50
5	5.00	7.65	9.75
6	6.25	8.90	11.00
7	7.50	10.15	12.25
8	8.75	11.40	13.50
9	10.00	12.65	14.75
10	11.25	13.90	16.00
11	12.50	15.15	17.25
12	13.75	16.40	18.50
13	15.00	17.65	19.75
14	16.25	18.90	21.00
15	17.50	20.15	22.25
16	18.75	21.40	23.50
17	20.00	22.65	24.75
18	21.25	23.90	26.00
19	22.50	25.15	27.25
20	23.75	26.40	28.50
21	25.00	27.65	29.75
22	26.25	28.90	31.00
23	27.50	30.15	32.25
24	28.75	31.40	33.50
25	30.00	32.65	34.75
26	31.25	33.90	36.00
27	32.50	35.15	37.25
28	33.75	36.40	38.50
29	35.00	37.65	39.75
30	36.25	38.90	41.00



**Specifications:**  
Housing: High temperature plastic UL94V-0; Color: natural  
Terminal: Copper alloy, Matte Tin/Bright Tin  
Product must comply HF RoHS specification  
Contact resistance: ≤30mΩ  
Insulation resistance: ≥100MΩ  
Rated voltage: 50V AC/DC  
Rated current: 0.5A AC/DC  
Withstand Voltage: 250V AC/minute  
Temperature Range: -25°C ~ +85°C

**ORDER INFORMATION:**



**JKUN** 温州健坤接插件有限公司  
WENZHOU JKUN CONNECTOR CO.,LTD.

GENERAL TOLERANCE		USE:
X.X ±0.15	X. ±5'	CUSTOMER
X.XX ±0.10	X.X ±2'	APPD: Shaojinghe
X.XXX ±0.05	X.XX ±1'	CHKD: Shaojinghe
⊕	UNITS: mm	DR: Ryan

TITLE: FPC Pitch1.25 H5.5 Non-ZIF CONN. SMT Normal Type	
PART NO.: F1252AWVN-**-C1CA1-R	
DWG NO.: JKUN/GCKH-0908	
SCALE 1 : 1	SHEET 1 / 1